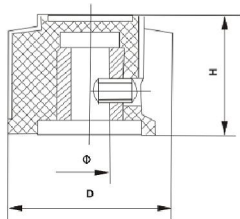




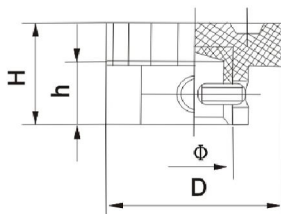
KDJ型



型号 type	D	H	Φ	
KDJ22-16-4	22	16	4	
KDJ25-18-6	25	18	4	6
KDJ28-20-6	28	20	6	
KDJ32-20-6	32	20	6	
KDJ40-20-6	50	22	6	8



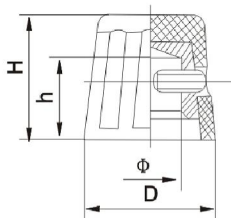
K67型



型号 type	D	H	H	Φ
K672	31.5	16.5	10	6
K674	40.5	20.5	13	6
K676	52.5	22.5	13	6
K678	70	25	15	10



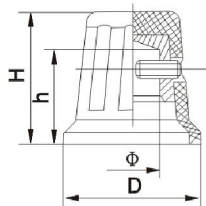
K16型



型号 type	D	H	h	Φ
K16-01	12	16	10	4
K16-02	14	16	10	4 6
K16-1	18	18	10	6
K16-2	19	16	10.5	6
K16-3	20	22	12	6



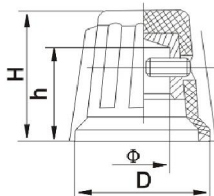
K17型



型号 type	D	H	H	Φ
K17-01	15	17	10	4
K17-02	18	17	10	4 6
K17-1	28	20	13	6
K17-2	32	20	13	6



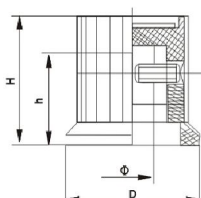
K18型



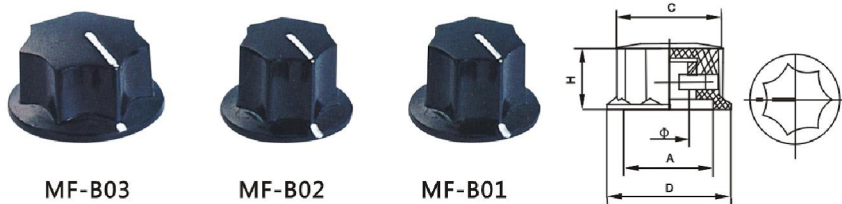
型号 type	D	H	H	Φ
K18-01	19	15	11	4 4
K18-02	24	15	10.5	4 6
K18-1	28	20	13	6
K18-2	32	20	13	6
K18-3	40	22	14	6



KYP型



型号 type	D	H	H	Φ
KYP16-16-4	16	16	13	4
KYP18-16-6	18	18	13.5	4 6
KYP22-18-6	22	18	14.5	6
KYP25-18-6	28	20	15	6
KYP32-20-6	32	20	15	6



MF-B03 MF-B02 MF-B01
MF-B型

型号 type	D	A	H	Φ
MF-B01	Φ23.8	Φ13.8	15	6.0 6.4
MF-B02	Φ28	Φ19.7	15	6.0 6.4
MF-B03	Φ33.5	Φ23.4	15	6.0 6.4



MF-A05 MF-A04 MF-A03 MF-A02 MF-A01
MF-A型

型号 type	D	A	H	Φ
MF-A01	Φ19.5	Φ12	11.5	6.0 6.4
MF-A02	Φ22.9	Φ14.5	12.7	6.0 6.4
MF-A03	Φ27	Φ21	16	6.0 6.4
MF-A04	Φ33	Φ26	16	6.0 6.4
MF-A05	Φ45	Φ37.1	20.3	6.0 6.4



KYZ32-16-6 KYZ25-18-6 KYZ20-18-6 KYZ18-18-6 KYZ16-18-4
KYZ型

型号 type	D	H	Φ
KYZ12	12	18	3.2 4
KYZ14	14	18	3.2 4
KYZ16	16	18	3.2 4 6
KYZ18	18	18	4 6
KYZ20	20	18/22	4 6
KYZ25	25	18	6
KYZ32	32	16	6



KN113-A KN113-B KN113-C
KN-113型

型号 type	A	B	C	D	E	H	(SHAFT) HOLE
KN113-A	Φ21.5	Φ25.4	Φ22	Φ29.1	Φ3.2	Φ16.4	Φ6.1 Φ6.4
KN113-B	Φ16.7	Φ19.5	Φ13.2	Φ23	Φ3	Φ16.2	Φ6.1 Φ6.4
KN113-C	Φ10.8	Φ13.2	Φ8.9	Φ15	Φ2.4	Φ15.1	Φ3.2 Φ6.1 Φ6.4



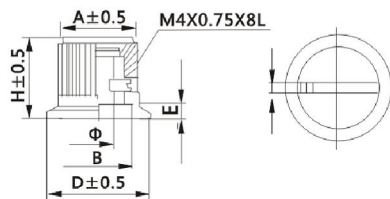
KN-115型 内孔锁紧 Inner Hole With Lock

型号 Type	A	B	D	C	H	MXPXL	(SHAFT)HOLE
KN15-C	Φ3	Φ30	Φ36.0	4	22	4X0.7X4	Φ6.1 Φ6.4
KN15-D	Φ25	Φ22	Φ28.5	38	20.5	4X0.7X4	Φ6.1 Φ6.4
KN15-E	Φ18.8	Φ17	Φ21.3	3	20	4X0.7X4	Φ6.1 Φ6.4
KN15-F	Φ12.8	0	Φ15.3	0	19.5	4X0.7X4	Φ6.1 Φ6.4



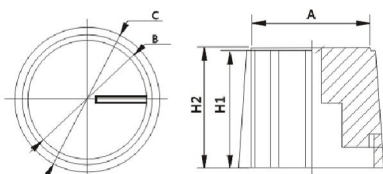
KN-116型 内孔锁紧 Inner Hole With Lock

型号 Type	A	B	D	H	MXPXL	(SHAFT)HOLE
KN16-C	Φ33	Φ39	36.0	23	4X0.7X4	Φ6.1 Φ6.4
KN16-D	Φ25	Φ33	28.5	21.5	4X0.7X4	Φ6.1 Φ6.4
KN16-E	Φ18.8	Φ25	21.3	20.7	4X0.7X4	Φ6.1 Φ6.4
KN16-F	Φ12.7	Φ18	15.3	20.6	4X0.7X4	Φ6.1 Φ6.4



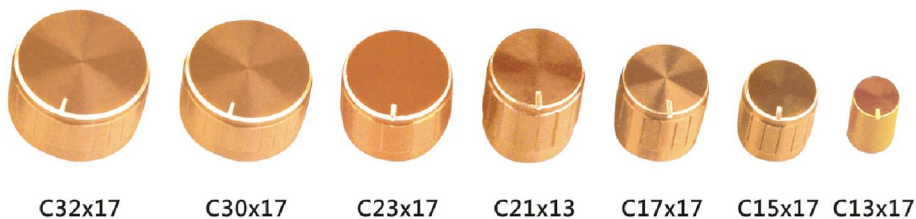
型号Type	A	B	D	E	H	F	SHAFTHOLE
KN-8C	Φ27	Φ24.5	Φ34.8	2.5	18	2.9	Φ6.1 Φ6.4
KN-8D	Φ18	Φ15	Φ24	5	20	2.3	Φ6.1 Φ6.4
KN-8E	Φ14.5	Φ11.7	Φ20.3	2.9	15.6	2	Φ6.1 Φ6.4
KN-8F	Φ11.3	Φ9.5	Φ15.5	3	14.2	1.6	Φ3.2 Φ6.1 Φ6.4

KN-8C, 8D, 8E, 8F型



型号Type	A	B	C	H1	H2	SHAFTHOLE
KN106-A	Φ17.6	Φ19	Φ21.5	17.3	18	Φ6.1
KN106-B	Φ33.2	Φ35	Φ38	17.3	18.4	Φ6.1

KN-20型



Color 颜色	+ DiameterXHeight	
A: Black 黑色	10 X 15	26 X 17
B: Silver 银色	13 X 17	30 X 13
C: Golden 金色	15 X 17	30 X 17
	17 X 17	32 X 17
	21 X 17	40 X 17
	21 X 13	48 X 17
	23 X 17	

C32x17

C30x17

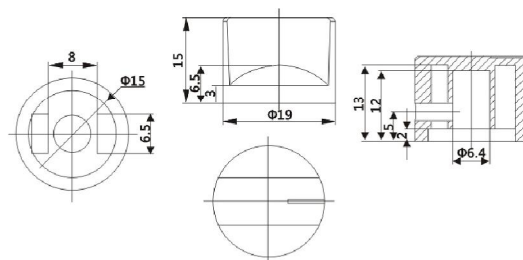
C23x17

C21x13

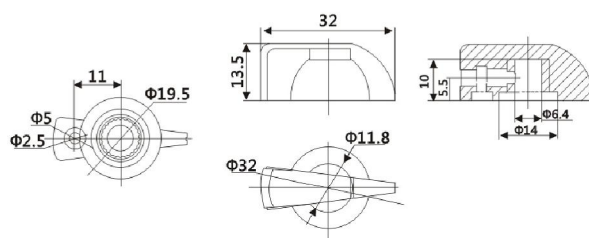
C17x17

C15x17

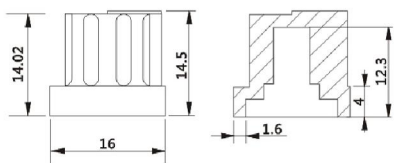
C13x17



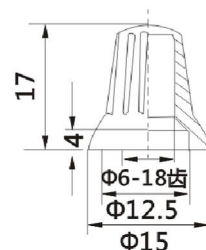
KN-19型



K7-1型



KN-1614型 Rubber material



KA483-5型 Plastic Knob